

LOANSTAR PUBLIC DOMAIN SOFTWARE FOR DATA ANALYSIS AND DATA VIEWING

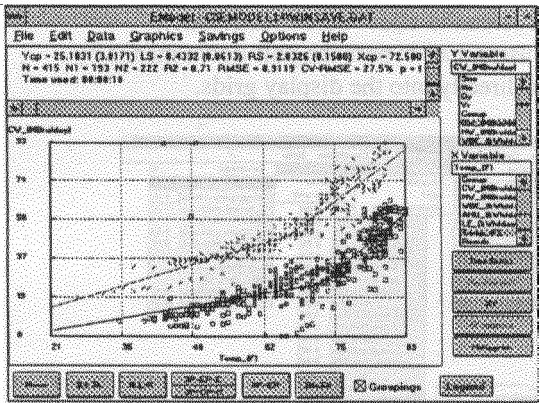
Jeff Haberl, David Claridge, Robert Sparks, Kelly Kissock
 Energy Systems Laboratory
 Texas Engineering Experiment Station
 Texas A&M University
 College Station, Texas 77843-3581

ABSTRACT

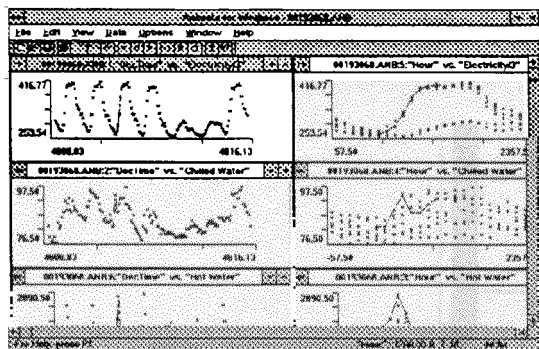
An important aspect of the Texas LoanSTAR program has been the development of public domain software. These software are now available.

OBJECTIVE OF THE SOFTWARE

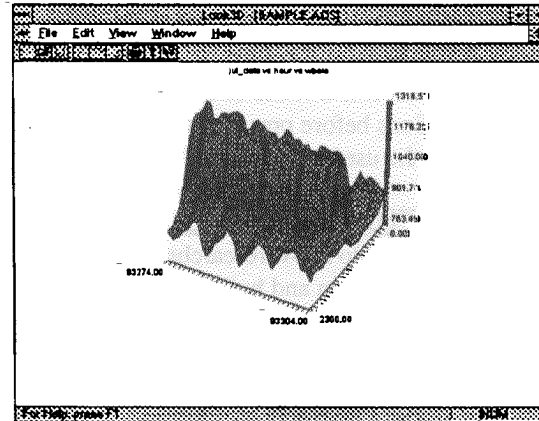
EMODEL is a MS Windows-based analysts workstation for performing linear, change-point linear, and multiple regression analysis on pre/post retrofit data to determine savings. EMODEL contains most of the analysis procedures developed as part of the LoanSTAR program.



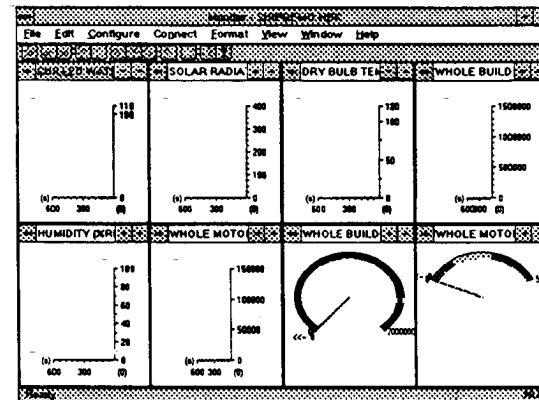
ANIMATE is the LoanSTAR's MS Windows-based data browser that allows for the animated viewing of multiple columns of data.



LOOK3D is a MS-Windows-based 3-D data viewing package.



The MONITOR can call certain types of loggers directly and display realtime data from multiple channels -- a inexpensive way to provide feedback to building operators from utility metering data.



ESL'S MOSAIC HOME PAGE. Additional information about the ESL software can be obtained by viewing the ESL's WWW home page at <http://www-esl.tamu.edu/> or by contacting the authors jhaberl@loanstar.tamu.edu.